

Blue Line Gen2
PIR Motion Detector
ISC-BPR2-W12



en Installation Guide

Optional Brackets:
B328, B338, B335

2,2 m - 2,75 m
(7.5 ft - 9 ft)
Recommended:
2,2m (7.5 ft)



NOTE:

This equipment has been tested and found to comply with the limits for a Class B digital device, pursuant to Part 15 of the FCC Rules. These limits are designed to provide reasonable protection against harmful interference in a residential installation. This equipment generates, uses and can radiate radio frequency energy and, if not installed and used in accordance with the instructions, may cause harmful interference to radio communications. However, there is no guarantee that interference will not occur in a particular installation. If this equipment does cause harmful interference to radio or television reception, which can be determined by turning the equipment off and on, the user is encouraged to try to correct the interference by one or more of the following measures:

- Reorient or relocate the receiving antenna.
- Increase the separation between the equipment and receiver.
- Connect the equipment into an outlet on a circuit different from that to which the receiver is connected.

UL/C-UL

Perform Walk Test at least once a year.
Use only a Listed limited-power source.
The Listed control unit or a Listed burglary power supply must provide 4 hours (40 mAh) of standby power.
Install the unit in accordance with National Electrical Code NFPA 70 and Part 1 of the Canadian Electrical code CSA C22.1.

CE EN 50131-2-2 Grade 2
EN 50130-5 Environmental Class II
IP30 IK04 (EN 60529, EN 50102)

Ligue todas as cablagens apenas a um circuito de segurança de tensão extra baixa (SELV).

Alle Drähte sind ohne Ausnahme an Niederspannung anzuschließen.

SELV

Connect all wiring to a safety extra-low voltage (SELV) circuit only.

INCERT B-509-0051/b

NF A2P Certificat NF A2P 2620200001
2 boucliers NF324 - H58
Autosurveillance à l'ouverture
Immunité champ magnétique
Testé sans masque de vision verticale
www.afnor.org
www.cnpp.com

Sluit alle bedrading uitsluitend aan op een circuit met een extra lage veiligheidsspanning.

Prenez soin de connecter tous les câbles à un circuit à très basse tension de sécurité (TBTS).

Collegare tutti i cavi esclusivamente a un circuito SELV (circuit di sicurezza a bassissima tensione).

Conecte el cableado únicamente a un circuito de seguridad para voltajes muy bajos (SELV).

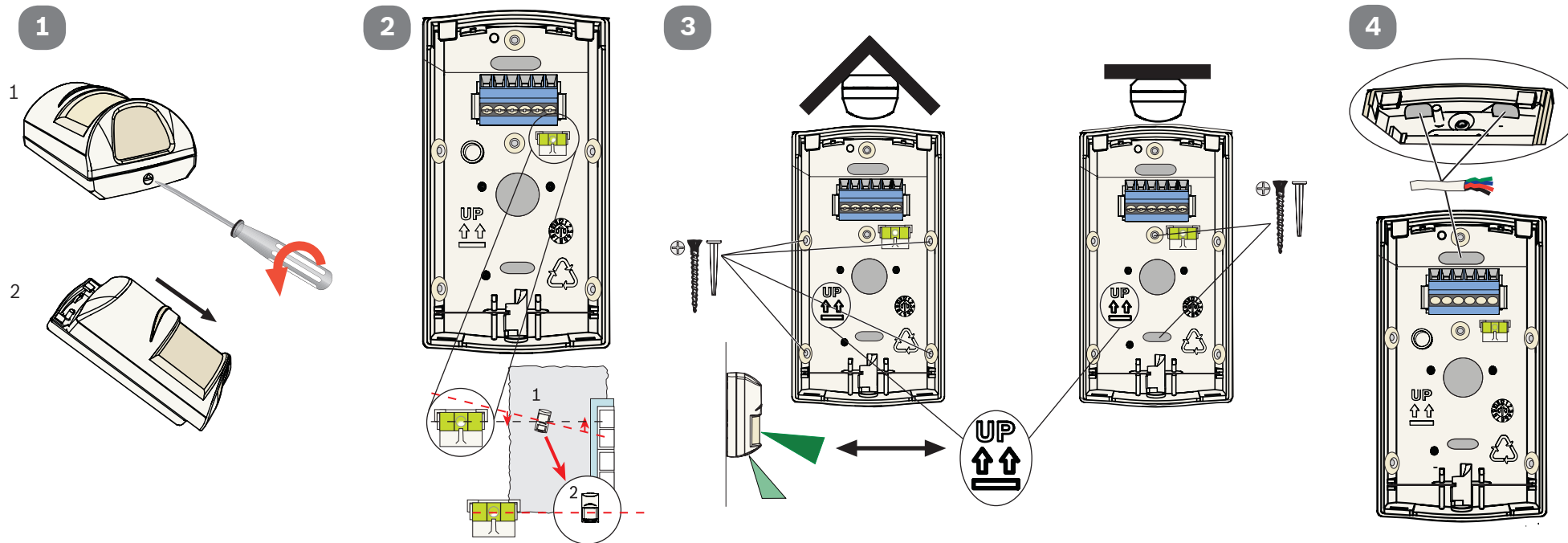
Changes or modifications not expressly approved by Bosch Security Systems, Inc. can void the user's authority to operate the equipment.

-30°C to +55°C
(-20°F to +130°F)
UL Listed installations,
the temperature
range is 0°C to +49°C
(+32°F to +120°F)

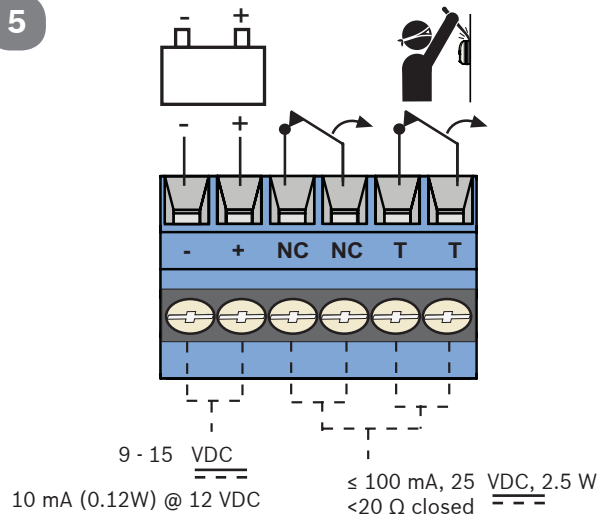
Pour les installations
certifiées NFA2P,
Température de
fonctionnement
-10°C à +55°C

0 - 95% Relative Humidity
(0 - 85% UL/C-UL installations)

För svensk installationsanvisning se www.boschsecurity.se.

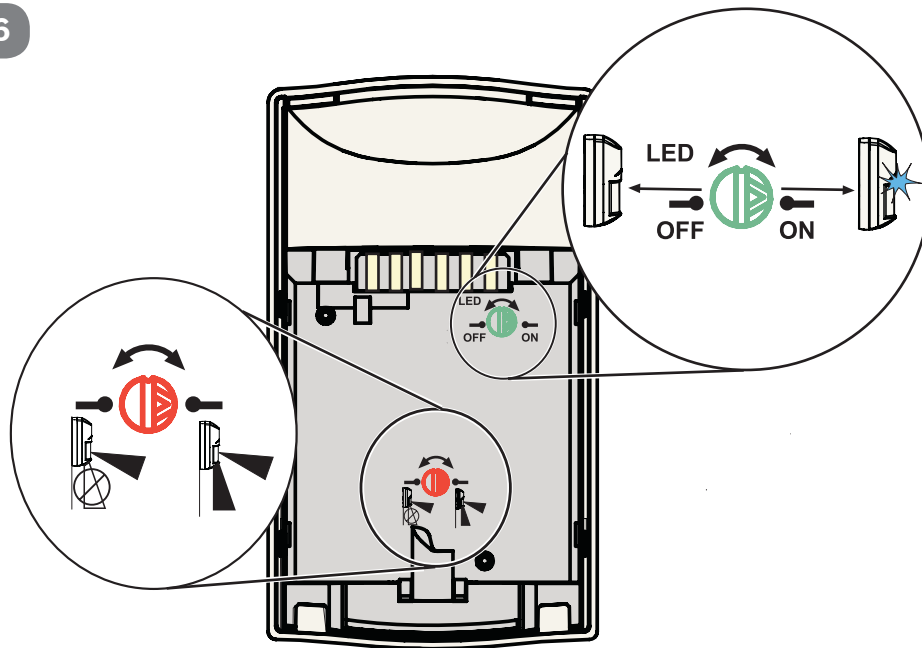


5

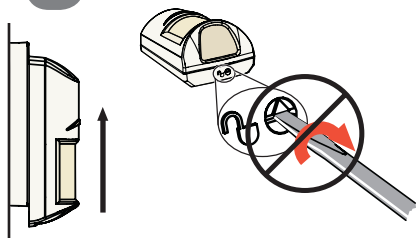


9-15 Vcc
 de 5 à 7 mA @ 12 Vcc en veille/
 en alarme, source limitée en
 puissance, ondulation
 résiduelle 1 V.

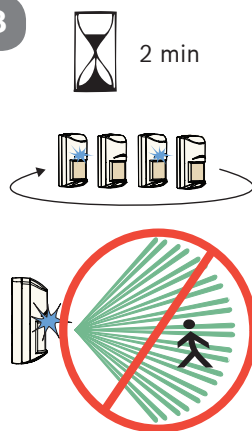
6



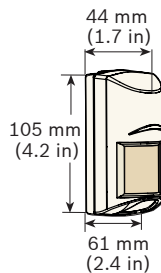
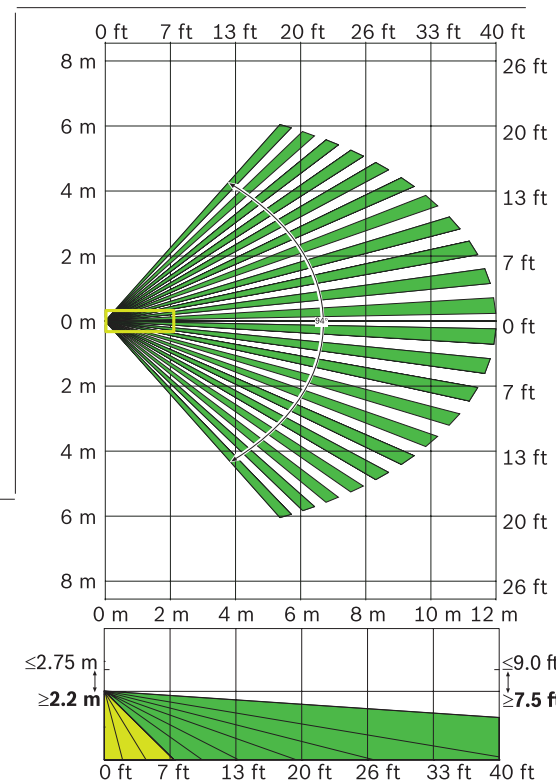
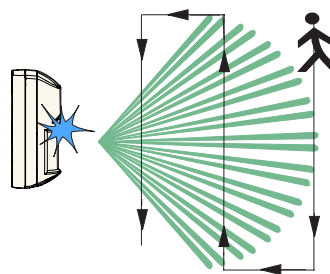
7



8



9



? → www.boschsecurity.com

Reading Bosch Security Systems, Inc. Product Date Codes
 For Product Date Code information, refer to the
 Bosch Security Systems, Inc. Web site at:
<http://www.boschsecurity.com/datecodes/>.

